

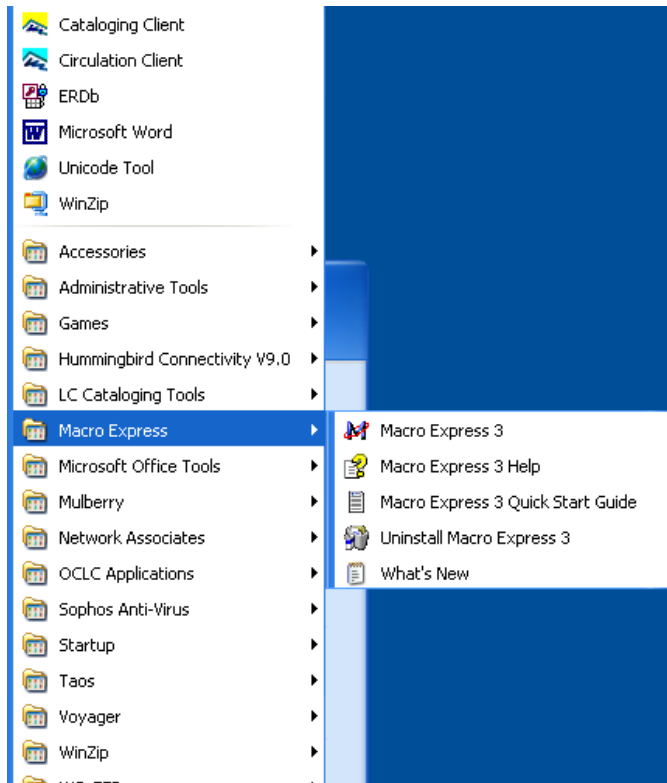
Using MacroExpress:

(Luiz Mendes, Valerie Bross, Claudia Horning)

Rev. Nov. 19, 2008 by rv

Macros to be used by the Copy Cataloging Section:

1. To use MacroExpress, from *Start* search *All Programs* for *MacroExpress*. Click on MacroExpress3



NOTE: Initial Macro Express setup **required** for each user on each computer. Contact your TAC for assistance.

2. The first time the installation is run, the **Macro Express 3 Quick Start Guide** will display.
 - A. Check box on the lower left corner:
 Do not show this next time Macro Express runs
 - B. Close Quick Start Guide

Using Macros

1. Copy Voyager Bib Number MACRO

Assumption: You have OCLC and Voyager open. You are working from a bib record in OCLC Connexion.

a. In Voyager:

- Search *Non-Keyword Search* for *System Number (035a/z)* to retrieve record by OCLC number in 035 a, 035 z, or 019 field (regardless of prefix).

(Note: OCLC numbers require 8-digit numbers. Add leading zeros as necessary.)

The screenshot shows the Voyager Search interface. At the top, there are four tabs: 'Keyword', 'Non-Keyword', 'Builder', and 'History'. The 'Non-Keyword' tab is selected. Below the tabs, there is a 'Search by' section with two radio buttons: 'Find' (selected) and 'Browse'. To the right of the 'Find' radio button is a dropdown menu showing 'System Number (035a/z)'. Below this are two filter sections: 'Heading Types Filter' and 'Locations Filter', both showing '< Not applicable >'. At the bottom, there is a 'Search for:' field containing the text '00711934'. Below the search field are four buttons: 'Do Search', 'Cancel', 'Clear', and 'Limit...'. The 'Do Search' button is highlighted with a black border.

- Retrieve a Voyager record. NOTE: Screen must be maximized.
- Apply Macro: **Control+** to maximized screen (default can be set in Preferences)
- Click OK or press Enter

MARC | System | History |

Leader | 00802nam a22002891 4500 | 006

005 | 19861111154056.0 | 007

008 | 711013 s 1966 nyu b 0 0 0 0 eng |

Tag	11	12	Subfield Data
010			‡a 66015670
035			‡a (OCoLC)00711934
035			‡9 07-ACH-2382
040			‡a DLC ‡c DLC ‡d m.c. ‡d CLU
050	0		‡a P123 ‡b .C53
100	1		‡a Chomsky, Noam.
245	1	0	‡a Cartesian linguistics: ‡b a chapt
250			‡a [1st ed.]
→ 260			‡a New York : ‡b Harper & Row, ‡c [1966]
300			‡a xi, 119 p. ‡c 21 cm.
490	0		‡a Studies in language
504			‡a Bibliography: p. 113-119.
650	0		‡a Cartesian linguistics.
650	0		‡a Creativity (Linguistics)
650	0		‡a Generative grammar.
740	0		‡a Linguistics.
910			‡a rcp 3
995			‡a M3336337

The Bib Record Number Copier

The Bib Record Number has been copied

OK

b. In OCLC:

- Create a 949 field.
- Type “b” to paste Voyager BIB ID in the OCLC record

Note 949 field in OCLC record with Voyager BIB ID:

OCLC		711934	Held by CLU - 1126 other holdings; 18 other IRs								
Books		Rec stat	c	Entered	19711013	Replaced 20080930194145.4					
▶ Type	a	ELvl		Srce		Ctrl		Lang	eng		
BLvl	m	Form		Conf	0	Biog		MRec		Ctry	nyu
		Cont	b	GPub		LitF	0	Indx	0		
Desc		Ills		Fest	0	DtSt	s	Dates	1966	,	
010					66015670						
040					DLC #c DLC #d EL\$ #d NLGGC #d NLM #d LVB #d CCV						
019					992805						
050	0	0			P123 #b .C53						
▶ 082					401						
090					#b						
▶ 049					CLUR #I L0055867766						
100	1				Chomsky, Noam.						
245	1	0			Cartesian linguistics: #b a chapter in the history of rationalist thought.						
250					[1st ed.]						
260					New York, #b Harper & Row #c [1966]						
300					xi, 119 p. #c 21 cm.						
490	0				Studies in language						
504					Bibliography: p. 113-119.						
650		0			Cartesian linguistics.						
650		0			Creativity (Linguistics)						
650		0			Generative grammar.						
740	0	1			Linguistics.						
▶ 910					Ihm 040614						
▶ 949					861052						

2. **Replace OCLC number (035a) in Voyager record macro**

Assumption: You want to replace an OCLC number in Voyager record. *Macro only works with OCLC Connexion.*

- a. In OCLC Connexion: retrieve record that matches item in hand
Check to see if it matches record selected by Acquisitions (see printout in book).
(Note: for mismatches between record selected by cataloger and record selected by Acquisitions, cataloger will need to retrieve Acquisitions record in Voyager and replace 035a OCLC number to force overlay of record.)

- b. In Voyager:
 - Retrieve record using OCLC number from printout
 - Display record to have 035a replaced (maximized screen can be set in Preferences)
 - Toggle to OCLC screen
 - Press **Ctrl+Backspace** to run macro
 - Result: macro will toggle to Voyager
 - You will be prompted to replace or add OCLC (035a) if 035 is present in record.
 - Do NOT attempt to replace 035 \$9 field with 035 \$a. Macro will format 035 incorrectly and cause overlay to fail. Add 035 field instead.
 - Click OK or press ENTER
 - Save record (Boat Icon in Voyager)
 - Check 035a to make sure OCLC record number has been replaced with correct 8-digit number (add leading zeros as necessary)
 - Search System Number (035a|z) to make sure replacement was correctly performed and only one record is retrieved with that OCLC number.

MARC | System | History

Leader | 01102cam a22003374a 4500 | 006

005: 20030909160909.0 | 007

008 | 011031 s 2002 ____ i l u a b _ _ _ b e _ _ 0 0 1 _ 0 d e n g _ c

Tag	I1	I2	Subfield Data
010			‡a 2001089897
→ 035			‡a (OCoLC)48248119
035			‡9 07-AST-1696
040			‡a ONL ‡c ONL ‡d DAY ‡d CLU
020			‡a 0852297874
042			‡a pcc
050	4		‡a AE5 ‡b .E363 2002
090			‡a AE5 ‡b .E562 2002
049			‡a CLUK
245	0	4	‡a The new encyclopædia Britannica.
246	3	0	‡a Encyclopaedia Britannica
246	1	8	‡a Britannica
250			‡a 15th ed. (2002)
260			‡a Chicago : ‡b Encyclopaedia Britannica, ‡c c2002.
300			‡a 32 v. : ‡b ill. (some col.), maps (some col.) ; ‡c 29 cm.
504			‡a Includes bibliographical references.

OCLC Add or Replace

Replace OCLC number

Add 035 and OCLC number

OK Cancel

MARC				System	History
Leader	01102cam a22003374a 4500			006	
005:	20030909160909.0			007	
008	011031 s 2002 ____ ilu ab_ _ _ be_ _ 0 0 1 _ 0 d eng _ c				
Tag	I1	I2	Subfield Data		
010			‡a 2001089897		
→ 035			‡a (OCoLC)52264143		
035			‡9 07-AST-1696		
040			‡a ONL ‡c ONL ‡d DAY ‡d CLU		
020			‡a 0852297874		
042			‡a pcc		
050	4		‡a AE5 ‡b .E363 2002		
090			‡a AE5 ‡b .E562 2002		
049			‡a CLUK		
245	0	4	‡a The new encyclopædia Britannica.		
246	3	0	‡a Encyclopaedia Britannica		
246	1	8	‡a Britannica		
250			‡a 15th ed. (2002)		
260			‡a Chicago : ‡b Encyclopaedia Britannica, ‡c c2002.		
300			‡a 32 v. : ‡b ill. (some col.), maps (some col.) ; ‡c 29 cm.		
504			‡a Includes bibliographical references.		